

Follow Me, follow Me

0125

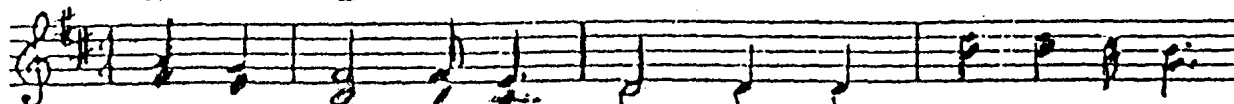
Chorus A7

D

A7

D

G

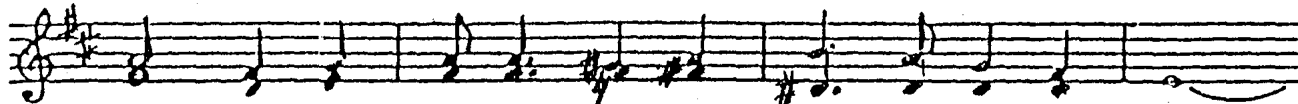


Fol-low me, fol-low me, leave your home and fa-mi-

D

B

Em



ly, leave your fish-ing nets and boats up-on the shore.---

A7

D

A7

D

G

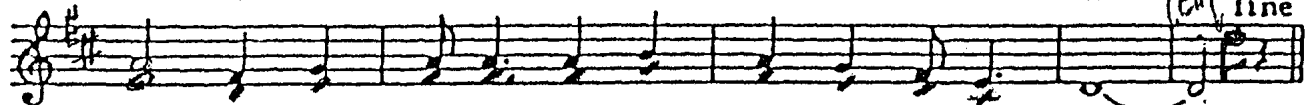


Leave the seed that you have sown, leave the crops that you've

D

A7

D



grown, leave the peo-ple you have known and fol-low me.---

Em

A7

D



1. The fox-es have their holes and the swal-lows have their

2. If you would fol-low me, you must leave old ways be-

G

F#



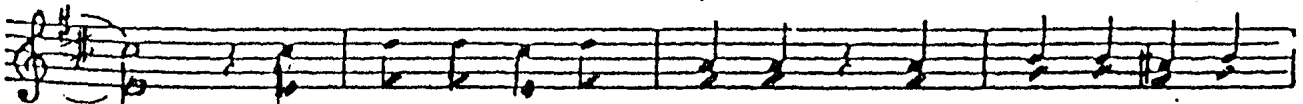
ness, but the Son of man has no place to lay down.---

hind. You must take my cross and fol-low on my path.---

Bm

F#m

G



I do not of-fer comfort, I do not of-fer
You may be far from loved ones, you may be far from

Em

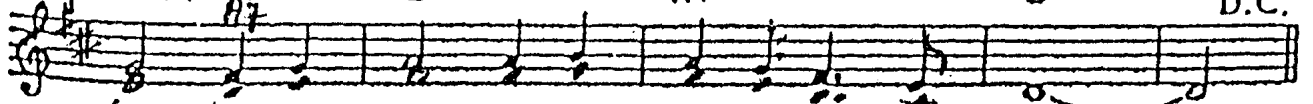
A7

D

A7

D

D.C.



wealth, but in me will all hap-pi-ness be found.---

home but my Fa-ther will wel-come you at last.---