



## Manual

PC-Software Save`n carry PP 50 pro

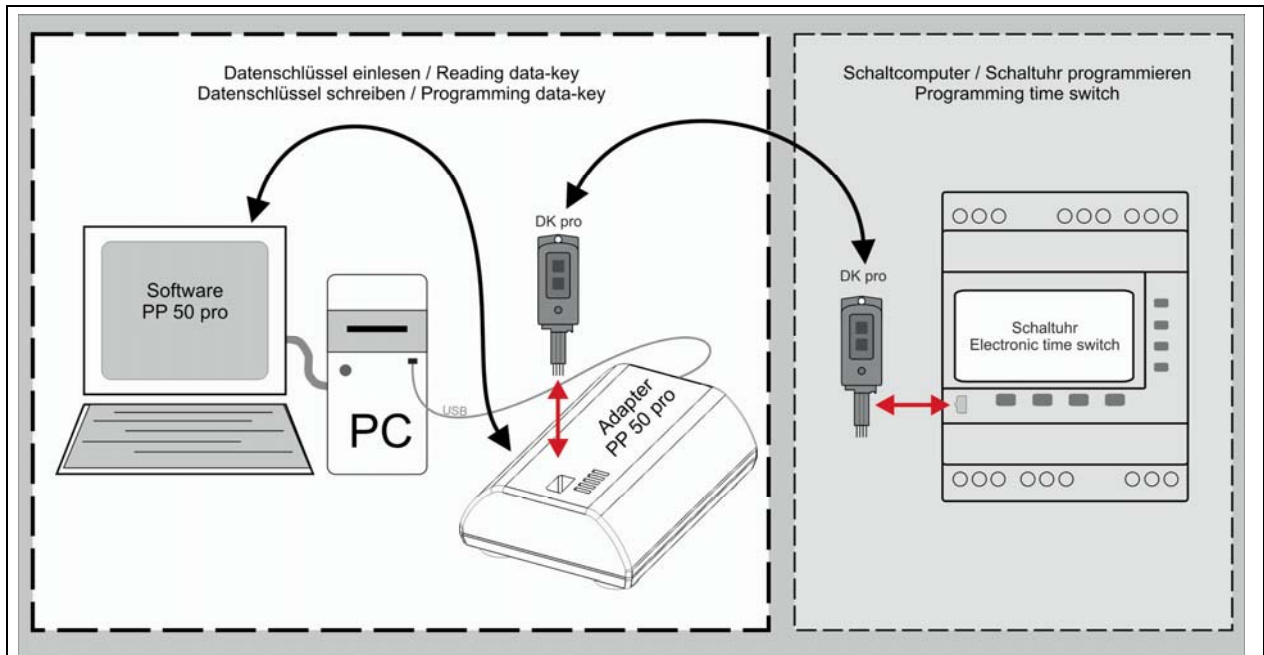
**1 Directory**

<b>1</b>	<b>Directory .....</b>	<b>2</b>
<b>2</b>	<b>Introduction .....</b>	<b>3</b>
2.1	Product description .....	3
2.2	Pictograms .....	3
2.3	Software installation .....	4
2.4	Hardware installation.....	5
<b>3</b>	<b>Program start and languages.....</b>	<b>8</b>
3.1	Start icon .....	8
3.2	Define type of time switch .....	8
3.3	Adjustment of the language .....	8
<b>4</b>	<b>Overview, menu and symbols.....</b>	<b>9</b>
4.1	Program overview .....	9
4.1.1	Table .....	9
4.1.2	Chart .....	9
4.1.3	Switch the mode of view .....	9
4.1.4	Refresh chart .....	10
4.1.5	Choose the period you are interested in! .....	10
4.2	Menu bar - overview.....	11
4.3	Toolbar .....	11
<b>5</b>	<b>Programming of a new switching time.....</b>	<b>12</b>
5.1	Programming of a standard switching time .....	12
5.2	SP special program (yearly time switch) .....	13
5.2.1	Activation of a special program (yearly time switch) .....	14
5.3	Add-Ons .....	15
5.3.1	Extra switching time .....	15
5.3.2	Permanent programm .....	15
<b>6</b>	<b>Data key functions .....</b>	<b>16</b>
6.1	Read data-key.....	16
6.2	Write data-key.....	16
<b>7</b>	<b>Further information.....</b>	<b>17</b>
7.1	Refreshing the chart.....	17
7.2	Duplicate .....	17
7.3	Cycle function .....	18
7.3.1	Cycle activation and definition .....	18
7.4	Saving / Location project files .....	18
<b>8</b>	<b>Address and Updates .....</b>	<b>19</b>
8.1	Address Hugo Müller.....	19
8.2	Updates.....	19

## 2 Introduction

### 2.1 Product description

The PC-Software „**Save`n carry PP 50 pro**“ is a tool for a quick and easy creation of a switching program. Via USB-adapter and data key „**DK pro**“ the switching program can be transferred between the PC and the PC.

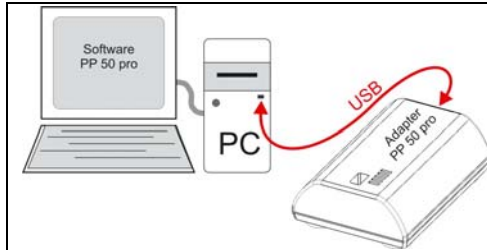


### 2.2 Pictograms

Pictograms	Definition
	<b><u>Information</u></b> The pictogram offers helpful information.
	<b><u>Title of a handling sequence</u></b> The pictogram shows the handling sequence.
	<b><u>Elements of a handling sequence</u></b> The pictogram prompts the user to carry out an action!!

## 2.3 Software installation

Please carry out following instructions for installing the programming software **Save`n carry PP 50 pro** successfully under Windows (2000, XP, VISTA):



### ➤ Software installation

- Insert CD **Save`n carry PP 50 pro** into CD/DVD-drive.
- Installation starts automatically, please carry-out advises of the routine.



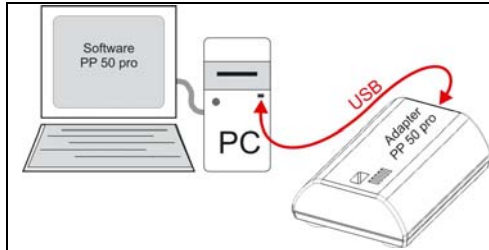
**Save`n carry PP 50 pro** will add an icon on the desktop and will be added within the start menu  
(Start menu: Start -> programs -> Save`n carry -> PP 50 pro)

**If the installation does NOT start automatically please carry out following sequence:**

- Open CD-directory and execute file PP50pro.exe
- Follow the on screen instructions

## 2.4 Hardware installation

Please carry-out following instructions for installing the USB adapter **PP 50 pro** successfully under Windows (2000, XP, VISTA):



### ➤ Step 1 – Connect USB-cable

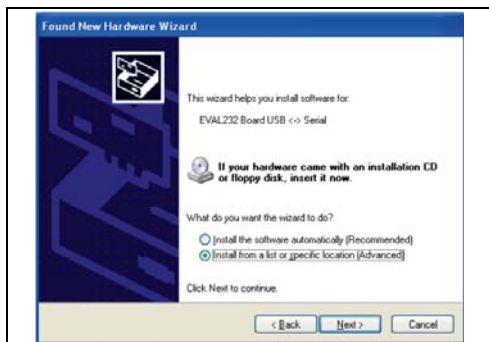
- ☞ Connect B-USB-connector of the cable (included in delivery) to adapter **PP 50 pro**.
- ☞ Connect A-USB-connector of the cable with your computer



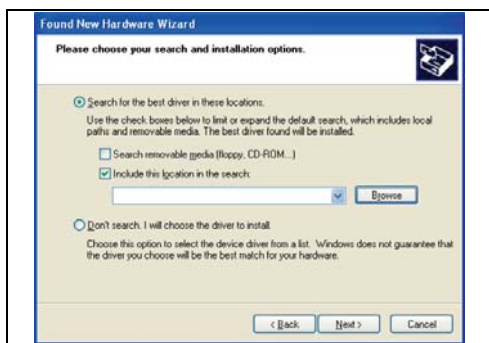
### ➤ Step 2 – Driver installation

After Step 1 the hardware installing tool of windows starts automatically:

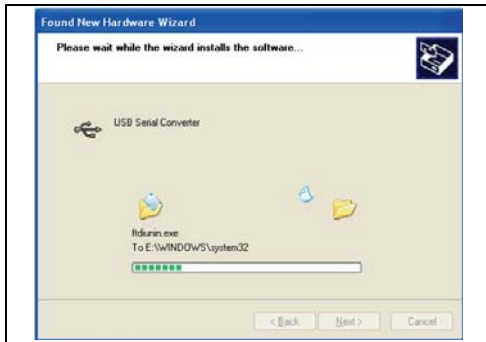
- ☞ Choose: „**No, ...**“
- ☞ Confirm with „**Next >**“



- ☞ Choose: „**Install from a list or specific location**“
- ☞ Confirm with „**Next >**“



- ☞ Confirm: „**Search for the best driver in these location**“
- ☞ Confirm: „**Include this location in the search**“
- ☞ Click „**Browse**“
- ☞ Enter the path to sub-folder „**treiber**“ on CD „**Save ´n carry PP 50 pro**“
- ☞ Confirm with „**Next >**“



**INFO** Windows copies driver



☞ Confirm security note with „**Continue Anyway**“.



☞ Complete the first part of the installation by clicking „**Finish**“.

**INFO** Further installation Steps required, the procedure will start automatically.

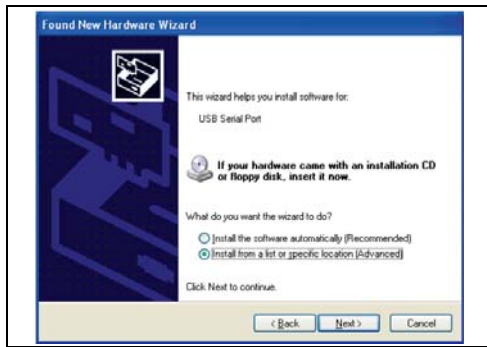


☞ Confirm again security note with „**Continue Anyway**“.



☞ Choose: „**No, ...**“

☞ Confirm with „**Next >**“



- ☞ Choose: „**Install from a list or specific location**“
- ☞ Confirm with „**Next >**“



- ☞ Confirm: „**Search for the best driver in these location**“
- ☞ Confirm: „**Include this location in the search**“
- ☞ 'Click „**Browse**“
- ☞ Enter the path to sub-folder „**treiber**“ on CD „**Save ´n carry PP 50 pro**“
- ☞ confirm with „**Next >**“

**INFO** Windows copies driver

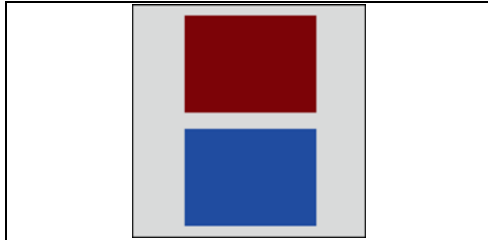


- ☞ Complete the the installation by clicking „**Finish**“.

**INFO** The hardware is now ready to use

### 3 Program start and languages

#### 3.1 Start icon



- ☞ Start the PC-software **Save'n carry PP 50 pro** by a double click of the **PP 50 pro** start-symbol

**OR**

- ☞ Execute **Save'n carry PP 50 pro** within "windows" start menu **Start -> Programs -> Save'n carry -> PP 50 pro.**

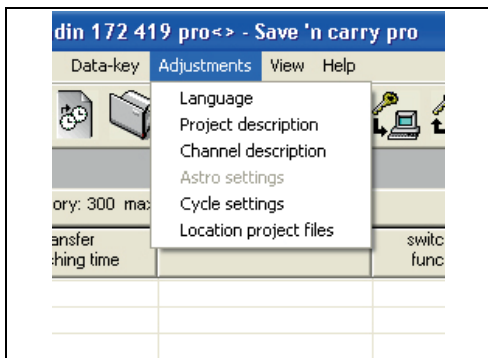
#### 3.2 Define type of time switch



The program starts with a welcome window.

- ☞ Choose the desired product type.
- ☞ Confirm with „**Next**“

#### 3.3 Adjustment of the language



➤ **Step 1**

To change the languages please proceed as follows:

- ☞ Click menu „**Adjustment**“
- ☞ Click menu „**Language**“



➤ **Step 2**

- ☞ Choose language
- ☞ Confirm with „**OK**“

➤ **Step 3**

- ☞ Restart the program



The new language configuration will be activated only after a restart of the software



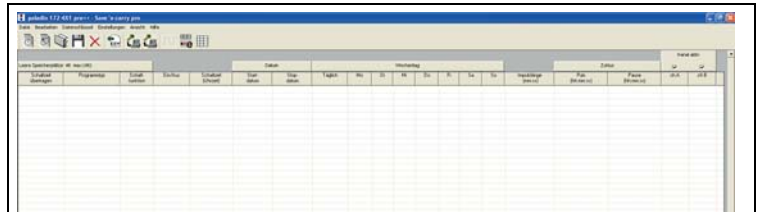
## 4 Overview, menu and symbols

### 4.1 Program overview

You have the choice between two different views of your switching program: **Table** and **chart**.

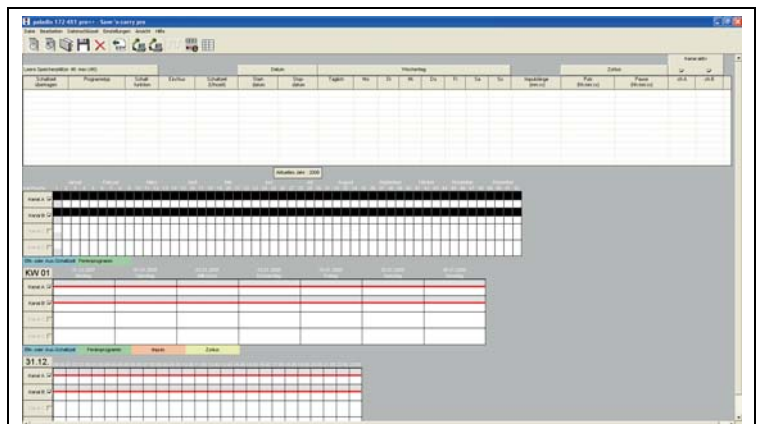
#### 4.1.1 Table

Default view is „table“ and the switching Steps are listed as lines.



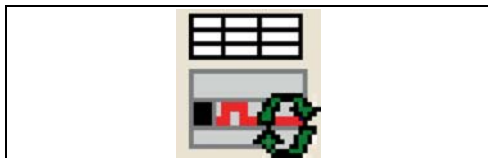
#### 4.1.2 Chart

You always have the possibility to switch between table and chart. If you switch to chart, three different charts with time dependent switching status of all channels will appear.



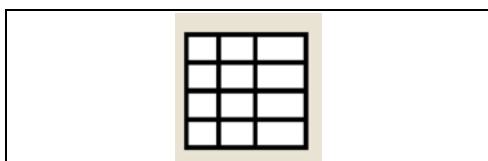
**PLEASE NOTE:** Special program (**SP 1 ... 10**) and extra switching times (**EXTRA**) will **NOT** shown in the chart!!!

#### 4.1.3 Switch the mode of view



 **Show chart / Refresh chart**

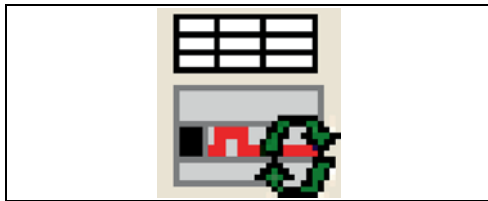
 Click „**Refresh chart**“ symbol



 **Show table**

 Click „**Show table**“ symbol

### 4.1.4 Refresh chart



If you are working with the chart, new switching times will only be shown if you refresh the chart by click „**Refresh chart**” symbol.

#### Refresh chart

Click „**Refresh chart**” symbol

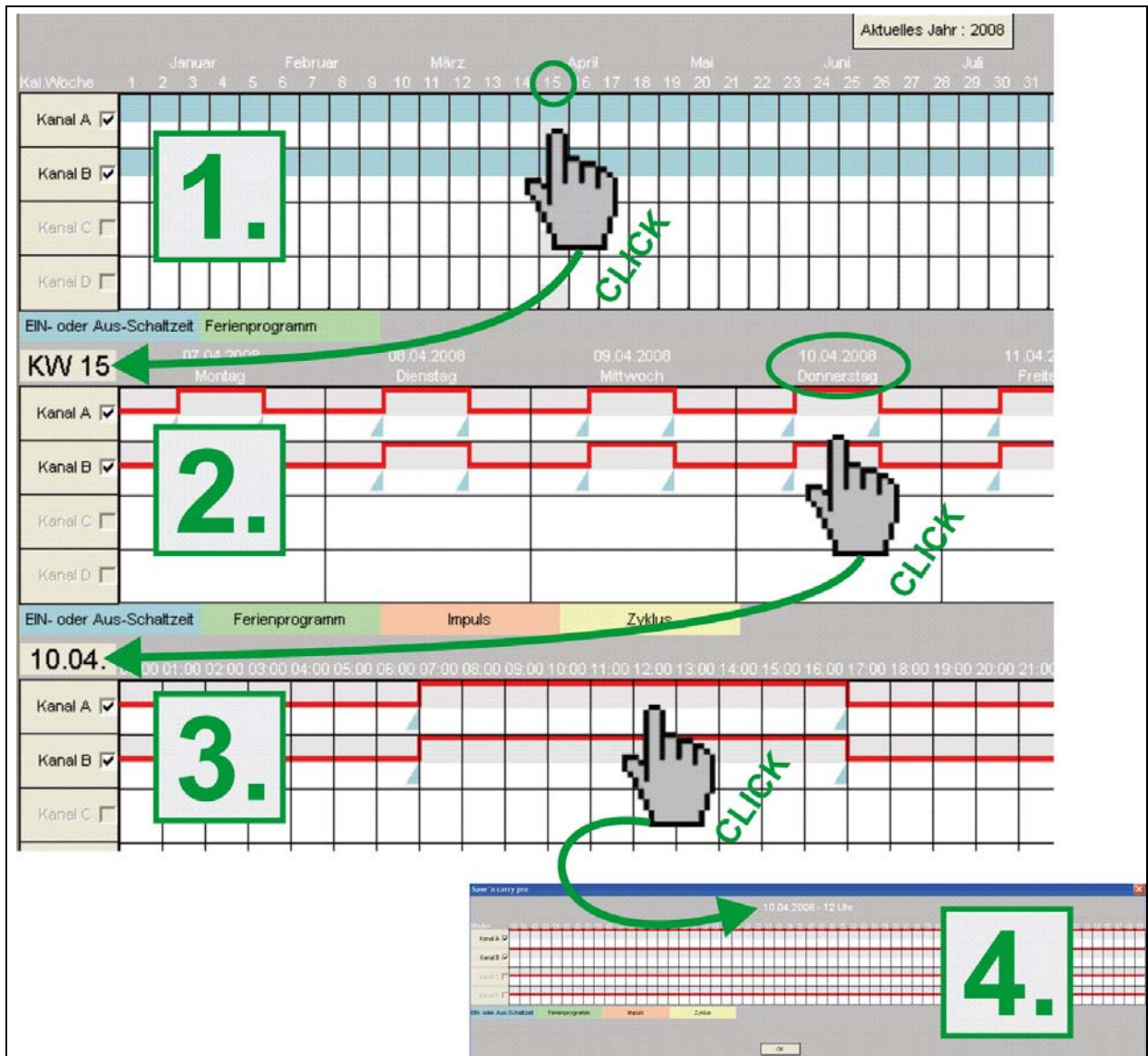


New switching Steps will only be shown after refreshing the chart.



The more memory locations you use, the longer it takes to refresh/show the chart. This can take up to 1 minute!

### 4.1.5 Choose the period you are interested in!



1. Yearly / 2. Weekly / 3. Daily / 4. Hourly

### 4.2 Menu bar - overview

File	Edit	Data-key	Adjustments	View	Help
New project	New switching time	Reading data-key	Language	Status bar	Manual
Open	Duplicate	Programming data-key	Project description	Toolbar	About...
Open last project	Delete		Channel description	Show chart	
Close project			Astro settings	Show table	
Save project			Cycle settings		
Save project as...			Location project files		
Export file as CSV					

### 4.3 Toolbar

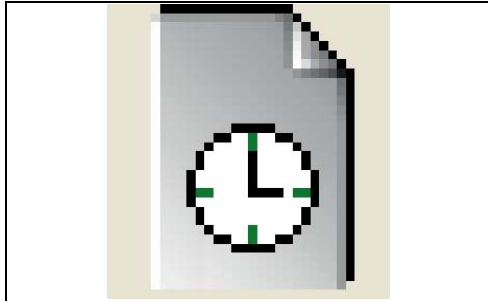
The toolbar of **Save`n carry PP 50 pro** is as follows:



Icon	Name: Description
	<b>New switching time:</b> Enter new switching time
	<b>Duplicate:</b> Enter new standard switching time on the basis on an existing one
	<b>Open project:</b> Open existing project file
	<b>Save project</b>
	<b>Delete:</b> Delete marked switching Step
	<b>CSV export:</b> Export switching program as coma separated file
	<b>Reading data-key:</b> Read memory of the data key into the PC
	<b>Programming data-key:</b> Write switching program from the PC-program to the data key
	1. <b>Cycle settings (black):</b> Open cycle settings 2. <b>Cycle settings (gray):</b> Cycle function is not available for this time switch
	<b>Refresh chart:</b> Refreshes or shows charts of the time dependent switching functions
	<b>Show table:</b> Show switching program as table

## 5 Programming of a new switching time

### 5.1 Programming of a standard switching time



#### Step 1

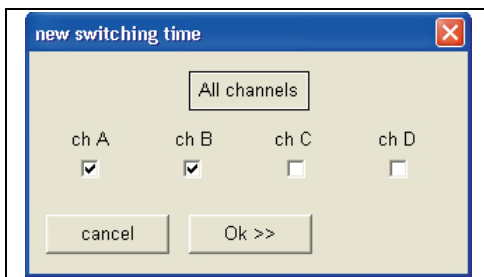
Click „**New switching time**“

OR

Double click an empty line within the table



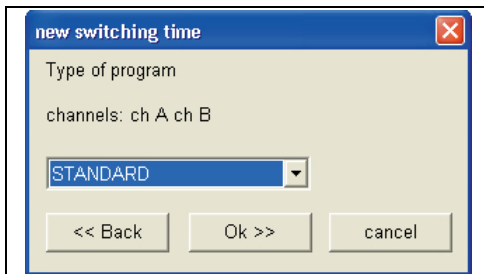
Window „**new switching time**“ opens!!



#### Step 2

Choose the channel / channels for which you would like to enter a switching time

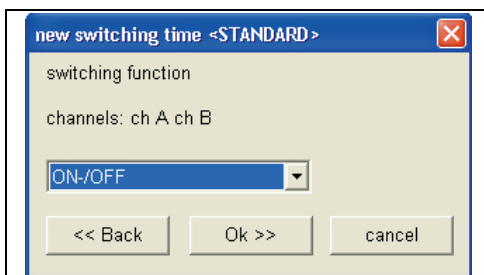
Confirm with „**OK >>**“



#### Step 3

Choose program type **STANDARD**

Confirm with „**OK >>**“



#### Step 4

Choose the desired **switching function**



Standard weekly time switch: **On-/Off** or **Pulse**

Astro timers: **On-/Off** or **ASTRO**

Weekly time switch with cycle function: **On-/Off, Pulse, Cycle\***

Yearly time switches: **On-/Off, Pulse, Cycle\***

\*Will only be offered after activation of Cycle(s)

Confirm „**OK >>**“



#### Further steps

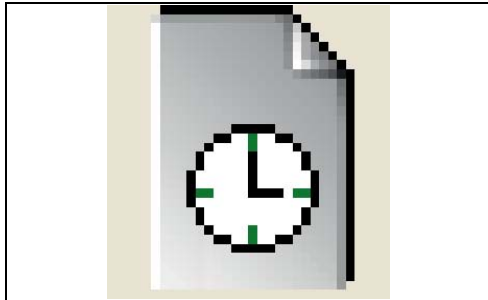


Further programming steps depend on the choice of the switching function (Step 4). Follow further advices within window „**new switching time**“

## 5.2 SP special program (yearly time switch)

The yearly function is fulfilled by the use of so called special (weekly) programs (SP) which are later activated (called up) by date as often as required. You can define up to 10 different special programs with arbitrary switching Steps (of course only within the total number of 300 memory locations).

The SP will only be applied if activated by date (SP Activation by date see point 5.2.1).



### Step 1

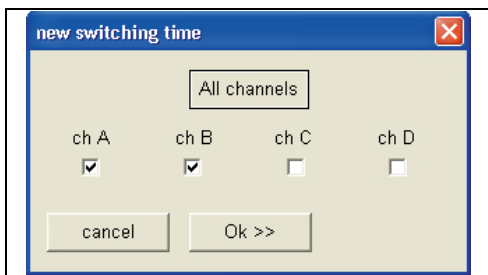
Click „**New switching time**“

OR

Double click an empty line within the table



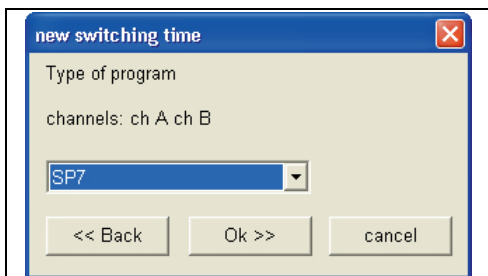
Window „**new switching time**“ opens!!



### Step 2

Choose the channel / channels for which you would like to enter a switching time

Confirm with „**OK >>**“



### Step 3



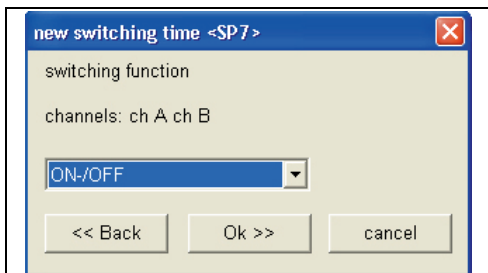
If you define a new switching time „**SP = special program**“, you have to choose a SP-Number **FIRST (SP 1 – SP 10)**.



You can enter within each special program (**SP 1 – SP 10**) as many switching Steps as required (limited only by the max. quantity of memory locations).

Choose program type **SP 1 – SP 10**

Confirm with „**OK >>**“



### Step 4

Choose the desired **switching function**



Within yearly time switches: **On/Off, Pulse, Cycle\***, (**Activate SP\*\***)

\*Will only be offered after activation of Cycle(s)

\*\*activation SP is NO switching function

Confirm with „**OK >>**“



➤ Further steps

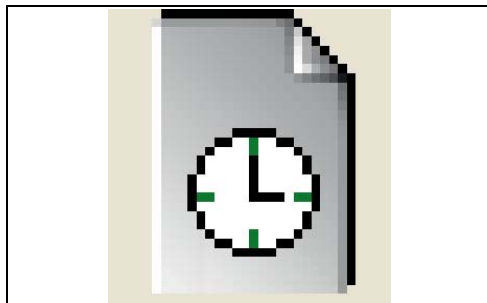
**INFO** Further programming steps depend on the choice of the switching function (Step 4). Follow further advices within window „**new switching time**“

**INFO** A **SP** will only be applied after **Activation** (call up by date) -> see point 5.2.1.

5.2.1 Activation of a special program (yearly time switch)

Special programs will only be applied if activated (called up) by date. SP can be called up as often as required (limited only by the max. quantity of memory locations).

The activation requires start date and end date of the date period.



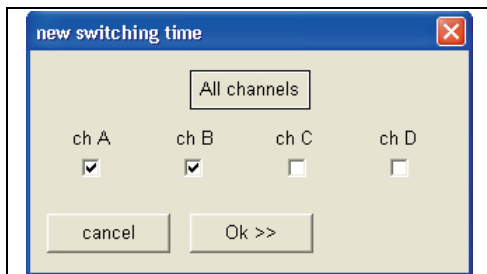
➤ Step 1

☞ Click „**New switching time**“

OR

☞ Double click an empty line within the table

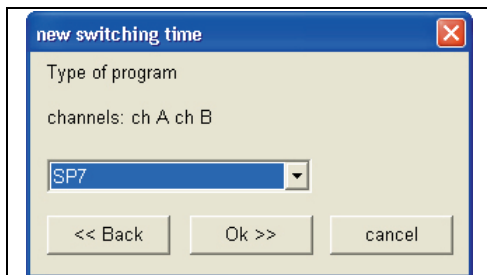
**INFO** Window „**new switching time**“ opens!!



➤ Step 2

☞ Choose the channel(s) for which you would like to activate a special program

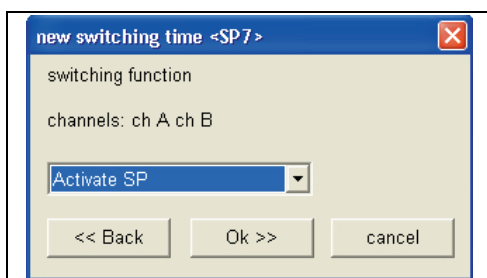
☞ Confirm with „**OK >>**“



➤ Step 3

☞ Choose the SP (**SP 1 – SP 10**) to be activated

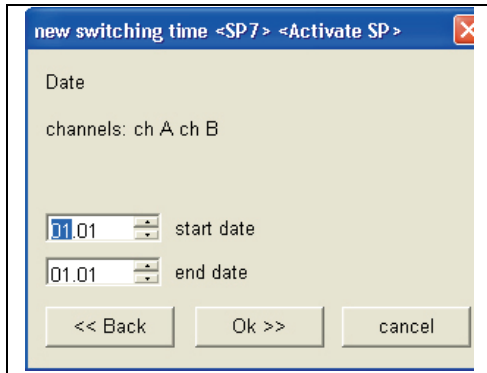
☞ Confirm with „**OK >>**“



➤ Step 4

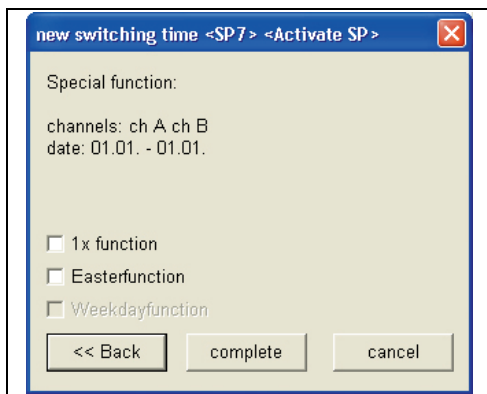
☞ Choose „**Activate SP**“ as switching function

☞ Confirm with „**OK >>**“



➡ Step 5

- ☞ Enter „**start date**“ and „**end date**“ of your special program
- ☞ Confirm with „**OK >>**“



➡ Step 6

- ☞ A „**Special function**“ can be activated optionally (standard is **NO** special function).
- ☞ Confirm with „**OK >>**“

### 5.3 Add-Ons



The following functions are NOT included in all types of time switches!!!

#### 5.3.1 Extra switching time

Extra switching time is one single additional switching time that can be programmed by date. This switching time is executed additionally to the active switching program.

If you like to program an extra switching time choose “**EXTRA**” as program type.

#### 5.3.2 Permanent program

The program type permanent (permanent by date, holiday program) is a permanent On or Off status for the desired channel and activated by date (start date till end date). A permanent switching program can be called up as often as required (limited only by the max. quantity of memory locations).

If you like to program an extra switching time choose „**PERMANENT**“ as program type.

## 6 Data key functions



For a successful data transfer the time switch and the type of time switch of the PC project must be identical!!!

### 6.1 Read data-key

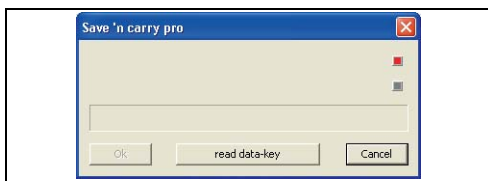


#### Step 1

Click symbol „**read data-key**“



Window „**Save `n carry pro**“ opens if project is empty!!

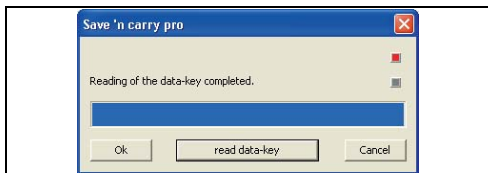


#### Step 2

Click „**read data-key**“



Data is now read from the data key!!



#### Step 3

Confirm with „**OK**“



All switching times will be shown on the screen of the PC!!

### 6.2 Write data-key

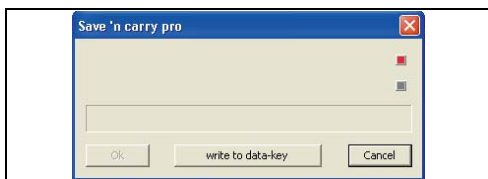


#### Step 1

Click symbol „**programming data-key**“



Window „**Save `n carry pro**“ opens!!



#### Step 2

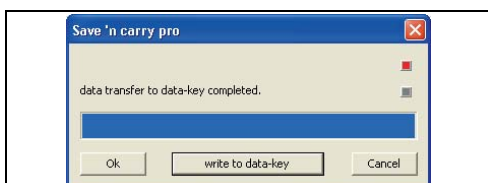
Click „**write to data-key**“



Data is now written to the data-key!!



Existing data on the data-key will be lost



#### Step 3

Confirm with „**OK**“

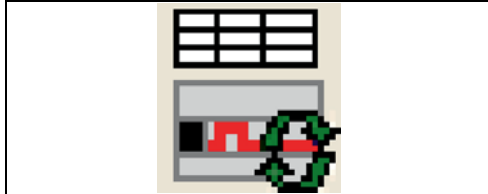


All switching times which are marked for transfer are written to the data-key and can be copied to the time switch of the same type. If you do so, the existing switching program of the time switch will be over written.



## 7 Further information

### 7.1 Refreshing the chart



While working with the chart view and if you enter a new switching time you have to refresh the chart before you see the switching time in the diagram.

#### ↻ Refresh chart

☞ click „**Refresh chart**“ symbol



New switching Steps will only be shown after refreshing the chart.



The more memory locations you use, the longer it takes to refresh/show the chart.

This can take up to 1 minute!

### 7.2 Duplicate



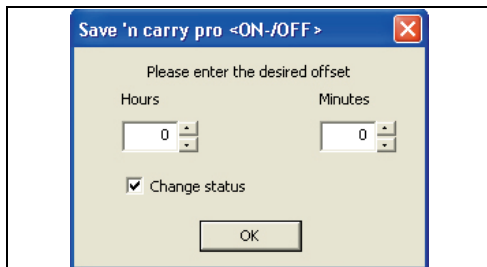
Standard switching times “**On/Off**”, “**Pulse**” or “**Cycle**” can quickly and easily be duplicated.

#### ↻ Step 1

☞ Click symbol „**duplicate**“



Window „**Save 'n carry pro**“ opens!!



#### ↻ Step 2

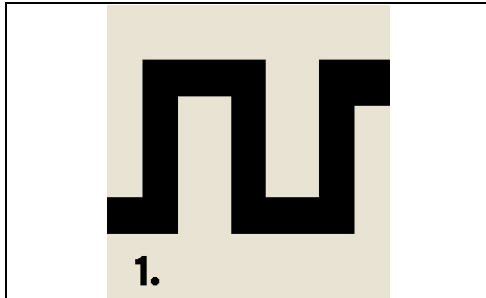
☞ This offset value is added to the switching time chosen for copy

☞ Confirm with „**OK**“

### 7.3 Cycle function

The cycle is not offered as switching function until you have defined a cycle. You have to define the cycle you would like to use first as follows:

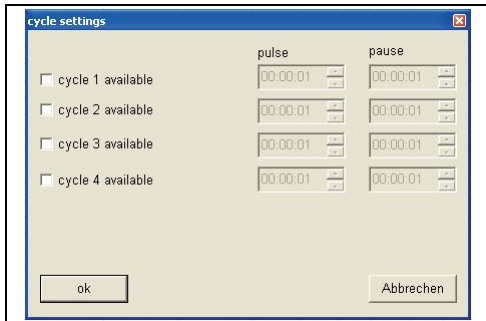
#### 7.3.1 Cycle activation and definition



#### Step 1

- click symbol „cycle-settings“

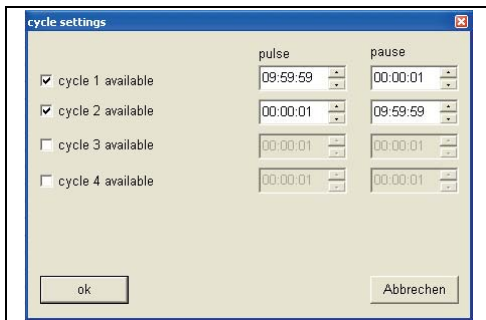
**INFO** Window „*cycle settings*“ opens!!



#### Step 2

Up to 4 different cycles can be activated and defined within this window.

- Activate the desired **cycle** number (click)

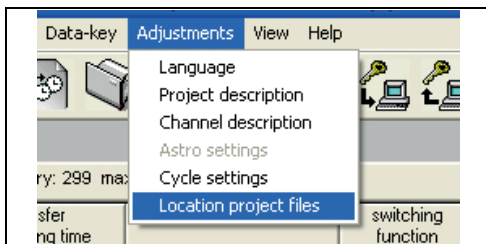


#### Step 3

The max. **pulse** and **pause** length is 9:59:59 (h:mm:ss) each

- Define Pulse and Pause length
- Confirm with „**OK**“

### 7.4 Saving / Location project files



#### Location of project files

- Click „**Adjustments**“
- Click sub-menu „**Location project files**“
- Define a project directory

## 8 Address and Updates

### 8.1 Address Hugo Müller

Hugo Müller GmbH & Co KG  
Sturmbühlstraße 145-149  
D-78054 VS-Schwenningen

Tel.: +49 7720 80 836

Fax: +49 7720 31 083

E-Mail: [info@hugo-mueller.de](mailto:info@hugo-mueller.de)

Internet: [www.hugo-mueller.de](http://www.hugo-mueller.de)

### 8.2 Updates

The most current version of „**Save`n carry PP 50 pro**“ is available on the website of Hugo Müller:

[www.hugo-mueller.de](http://www.hugo-mueller.de)